

SERVER XC / EXPLORER

SPARE PARTS



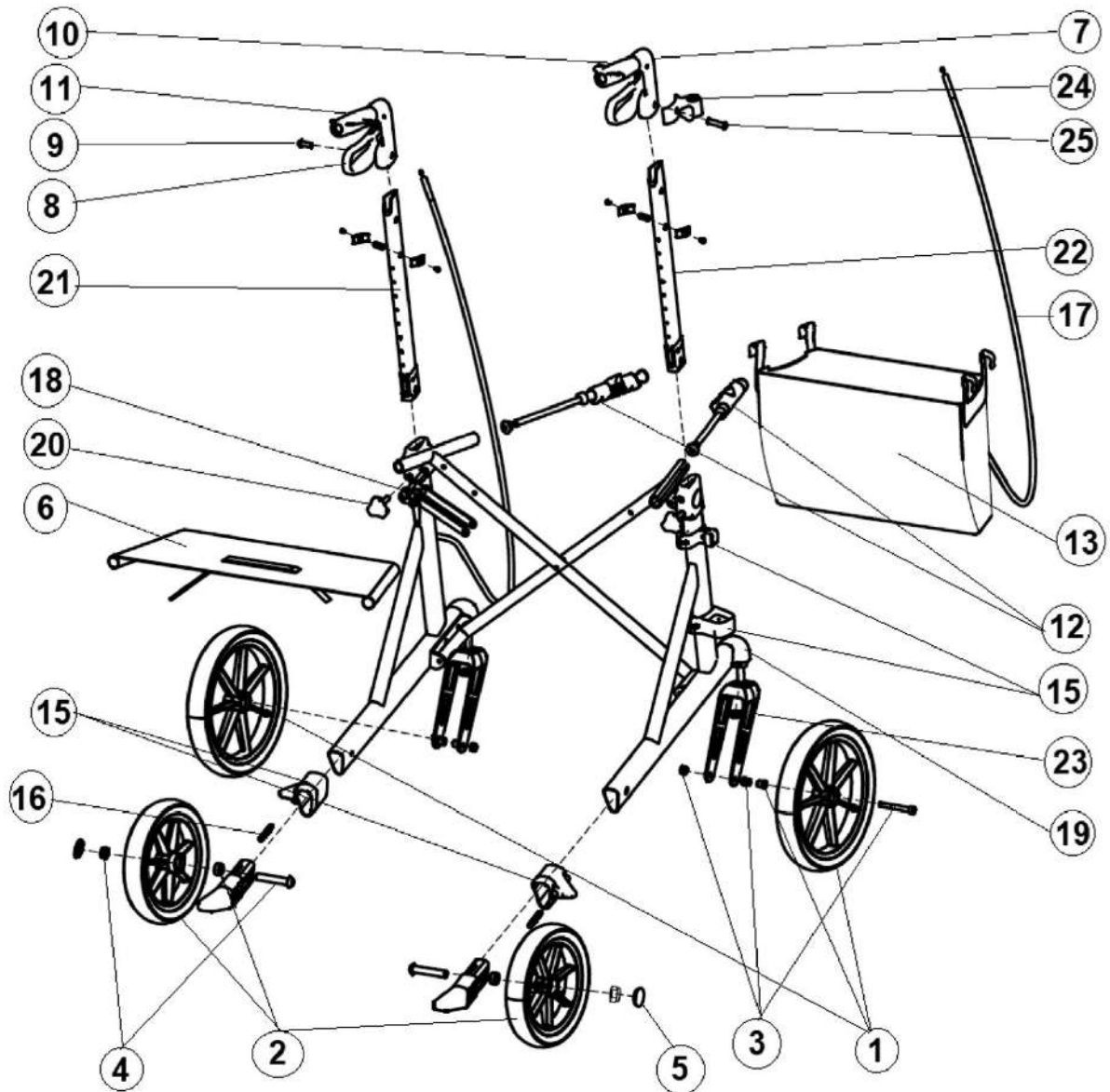
REHASENSE



Pricelist is valid from 1.01.2025 until the new one is published.

Please send orders by email to the following address: ukadmin@rehasense.com

TECHNICAL DRAWING FOR SERVER XC / EXPLORER



No.	Picture	Item description	Item no	RRP included
1		Black front wheel - for Explorer. 2pcs/set	ROL34H-RS	
2		Black rear wheel - for Explorer. 2pcs/set	ROL34J-RS	
3		Fitting set for front wheels of explorer, 1set packed/rollator	1910H7-RS	
4		Fitting set for rear wheels of rollator, 1set packed/rollator	1910CX-RS	
5		Cap for axle hole on rear wheels, black rubber	641005	
6		Seat - for Explorer	ROL5AB-RS	
7		Complete push handle incl. brake lever - right	ROL1DK-RS	
8		Complete push handle incl. brake lever - left	ROL1DL-RS	
9		Screw m5 x 10 mm, black galvanized - used for fixing the complete push handle	19102C	
10		Right hand grip for push handle - black soft TPR	ROL1IU-RS	
11		Left hand grip for push handle - black soft TPR	ROL1IV-RS	
12		Complete steel shaft with a+lock for bag and seat, (set of 2 pcs, left and right tubes)	ROL20A-RS	
13		Basket for Explorer, size: M, with packing	ROL5AAM-RS	
		Basket for Explorer, size: L, with packing	ROL5AA-RS	

No.	Picture	Item description	Item no	RRP included
14		Crutch holder set	ACR01012	
15		Brake block set for rollator, left +right side as one set	ROL1DR-RS	
16		Spring for brake block/brake cable, l46 mm	64100X	
17		Brake cable: d5 x 1028 mm – d1.5 x 1200 mm	69103B-RS	
18		Compl. locking mechanism for cross, for std. Explorer, L size, as RSE spare parts level	ROL2DX-RS	
		Compl. locking mechanism for cross, for std. Explorer, M size, as RSE spare parts level	ROL2DY-RS	
19		Plastic front piece set for Explorer, left + right side as one set	ROL213-RS	
20		Finger screw for height adjustment	ROL125	
21		Right size inner tube ASM, for large Explorer, 1pcs	ROL32F-RS	
		Right size inner tube ASM, for medium Explorer, 1pcs	ROL32FM-RS	
22		Left size inner tube ASM, for large Explorer, 1pcs	ROL32D-RS	
		Left size inner tube ASM, for medium Explorer, 1pcs	ROL32DM-RS	
23		Black front fork-for Explorer, 1pcs.	ROL22Z-RS	
24		Standard holder for umbrella and infusion rack – (already included in accessories with part no. ACR01014 and ACR01002)	ROL1DJ	
25		Mounting kit for backrest including bolts and wrench	ROL34C	
		Repair kit for rollators contains 19 different small parts used for Athlon, Server, Athlon HD, Server HD, Explorer, Navigator and Navigator air	ACR01020R	

NOTE: We do not offer cross and side frames as spare parts. With good reason we classify such damages as dangerous wand total loss. It means the user needs a new rollator. Safety is the highest priority.



REHASENSE

REHASENSE UK
UNIT 5, GUILFORD ROAD
INDUSTRIAL ESTATE
HAYLE, CORNWALL, TR27 4BA
UNITED KINGDOM
☎ **+44 (0) 333 220 0704**
✉ **UKADMIN@REHASENSE.COM**

REHASENSE ITALY SRL
VIALE DELLE INDUSTRIE 5
20044 ARESE (MI) ITALY
☎ +39.02.99 77 08
✉ INFO.ITALY@REHASENSE.COM

REHASENSE DEUTSCHLAND GMBH
STERNBERGER STRASSE 12,
32699 EXTERTAL,
GERMANY
☎ +49 2821 590 8587
✉ INFO@REHASENSE.COM

REHASENSE DENMARK
GLARMESTERVEJ 16 A, ST. TV.
8600 SILKEBORG,
DENMARK
☎ +49 176 588 788 01
✉ INFO@REHASENSE.COM

REHASENSE SP. Z O.O.
SULEJOWSKA 45G
97-300 PIOTRKÓW TRYBUNALSKI
POLAND
☎ +48 880 331 272
✉ INFO@REHASENSE.COM

REHASENSE BENELUX
MARKEWEG 81
8398GM BLESIJKE,
NETHERLANDS
☎ +31 653 837 211
✉ INFO@REHASENSE.NL

REHASENSE SVERIGE AB
POLHEMSGATAN 28, SE-392 39 KALMAR
SWEDEN
☎ +46 722 325 090
✉ MATS.LAVEBORN@REHASENSE.COM

REHASENSE CHINA
NO.289, WENGJIAO ROAD
XINYANG INDUSTRIAL AREA
361022 HAICANG, XIAMEN,
CHINA
☎ +86 592 688 4014
✉ EVELYN.CHEN@REHASENSE.COM

REHASENSE KOREA
1F. 338-46, DONGBUSUNHWAN-RO,
WONJU-SI 26454 GANGWON-DO,
REPUBLIC OF KOREA
☎ +82 070 4216 3429
✉ JONGSUNG.KIM@REHASENSE.COM

REHASENSE NEW ZEALAND
UNIT 4, 260 APIRANA AVENUE
GLEN INNES, AUCKLAND, 1072,
NEW ZEALAND
☎ +09 555 3111
✉ NZ-INFO@REHASENSE.COM

REHASENSE MOBILITY CANADA LTD
137 BUTTERMILL AVENUE
CONCORD, ONTARIO, L4K 3X5
CANADA
☎ +1 289 654 1901
✉ INFO.CANADA@REHASENSE.COM

REHASENSE USA
1333 BURR RIDGE PARKWAY, SUITE 200
BURR RIDGE, IL 60527,
USA
☎ +1 630 756 3099
✉ INFO-USA@REHASENSE.COM

REHASENSE MENA
QETAF MEDICAL EST
3599 PRINCE MOHAMMED BIN
ABDULAZIZ ST,
SAUD LANGAWI CENTER, AL ANDALUS
JEDDAH 23326,
SAUDI ARABIA
☎ +96 650 664 1993
✉ SALES-MIDDLE-EAST@REHASENSE.COM

REHASENSE COLOMBIA
CALLE 171 # 21 A 47
BARRIO LA URIBE, BOGOTÁ
COLOMBIA
☎ +57 3153118652
✉ IVANUMANA@REHASENSECOLOMBIA.COM

REHASENSE AUSTRALIA PTY LTD
☎ +61 475 856 207
✉ WERNER.PETZER@REHASENSE.COM

